



IDEAS. SYSTEMS. SOLUTIONS.



**BANTLEON**  
Ideas. Systems. Solutions.



OUR WORLD NEEDS  
INNOVATIVE IDEAS WITH  
HOLISTIC SYSTEMS AND  
SUSTAINABLE SOLUTIONS.



#### And BANTLEON Cares!

Honesty and fairness as well as an eco-social and ethical orientation are the strategic focus of our business policy. Based on this we want to impress our customers with high-performance products and comprehensive service. Our broad expertise in the development and production of our products makes us a driver of innovation and a pioneer in the industry. Customized solutions are evidence of flexibility and efficiency. In order to stay successful against the global competition, we convince our customers with future oriented processing media solutions. This is why sustainability and social responsibility are characteristic for our daily work processes. In the accredited laboratory, we take the development of ecological and innovative products into our own hands. We at BANTLEON support the trust needed for long-term partnerships with a corporate philosophy based on four strong value pillars: QUALITY, RELIABILITY, INNOVATION and SUSTAINABILITY

## CORPORATE PHILOSOPHY

### QUALITY

Quality does not only mean permanent compliance with defined parameters in all corporate areas, but also to exceed them.

### INNOVATION

Innovation means being open towards change and to open up market benefits for our customers with new solutions, innovative products and services.

### RELIABILITY

Reliability means consistently meeting oral and written promises, deadlines and agreements.

### SUSTAINABILITY

Sustainability means for us performing all activities in harmony with ecological balance, economic safety and social-ethical justice.





## INDUSTRY EXPERTISE

Many companies from different industries rely on lubricants and related products from BANTLEON. Our products ensure perfect conditions for the production, cleaning and corrosion protection coupled with other services to optimize your production process.

The typical industries in which we contribute all of our experience and competence primarily include:

- Automotive industry (Manufacturers and Suppliers)
- Construction machinery
- Concrete and building industry
- Gear and plant technology
- Timber and forestry
- Metal processing
- Food technology
- Aviation
- Medicine technology
- Maintenance and technical service

## PRODUCTS AND SERVICES



HIGH-PERFORMANCE  
LUBRICANTS



CLEANING  
MEDIA



CORROSION  
PROTECTION



VCI PACKAGING



R&D / LAB ANALYSIS



FLUID-  
MANAGEMENT



FILTER  
TECHNOLOGY



INDUSTRY AND TANK  
ENGINEERING



TANK MAINTENANCE  
AND TANK SERVICE



SEMINARS UND  
EVENTS





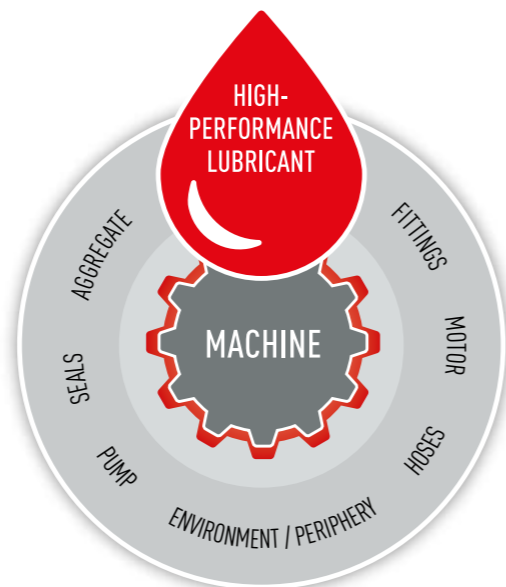
## LUBRICANTS FOR AUTOMOTIVE



With BANTLEON you can shift into a higher gear: Profit from optimal service development and a longer service life with our product solutions.

### PRODUCTS FOR AUTOMOTIVE APPLICATIONS

- Hydraulic oils
- Engine oils
- Gas engine oils
- Transmission oils / axles
- Radiator protection media
- Multi-purpose oils (UTTO)
- Greases



## LUBRICANTS FOR THE INDUSTRY



Whether for metal cutting or non metal cutting processes: Choose from a broad range of BANTLEON lubricants tested and evaluated in practice or have our specialists develop your individual solution.

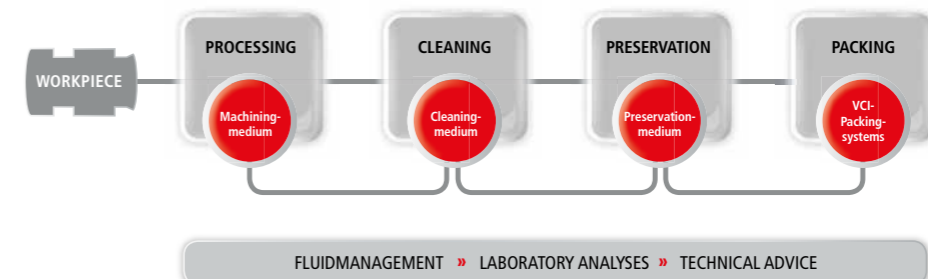
### LUBRICANTS FOR METAL CUTTING PROCESSES

- AVILUB METACOO: water-miscible cooling lubricant
- AVILUB METACON: neat cutting oils

### LUBRICANTS FOR NON METAL CUTTING PROCESSES

- AVILUB METAPRESS
- AVILUB METACOAT

### THE BANTLEON PROCESS SOLUTION COMPETENCE.







## CLEANING MEDIA



**BANTLEON cooperates closely with leading plant manufacturers in order to develop innovative products and application concepts for clean surfaces according to the defined cleanliness and residual contamination requirements.**

Because of this BANTLEON is able to offer a broad product portfolio to its customers. Due to this the ideal cleaning agent can be chosen depending on the existing plant engineering or the building material in need of cleaning.

The excellent balance between cleaning agents and process-media leads to long operating times and helps with conserving resources.

### AQUEOUS CLEANING PRODUCTS

- AVILUB METACLEAN

### SOLVENT-CONTAINING CLEANING PRODUCTS ON HC-BASIS AND ALCOHOL-BASIS

- AVILUB METASOLV

## CORROSION PROTECTION



**Rising demands for surface properties of parts require process reliable solutions. Liquid and dry preservation by BANTLEON ensures safety across the supply chain.**

Liquid preservation creates a protective film on the components, which aid a broad range of applications even under taxing atmospheric conditions. Dry conservation also creates such a protective film.

In combination dry and liquid preservation can unfold their effects in an ideal manner and thus contribute to the prevention of corrosion damage.

### LIQUID PRESERVATION

- AVILUB METACORIN
- AVILUB VCI

### DRY PRESERVATION

- VCI dispenser systems
- VCI dispenser boxes



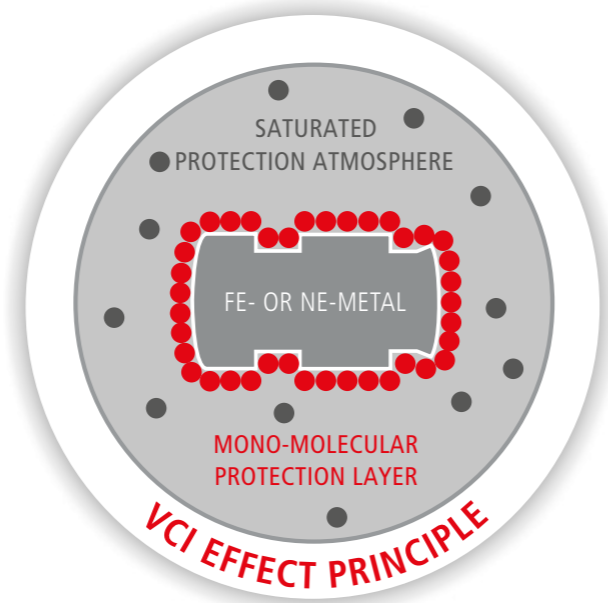
## VCI PACKAGING



VCI-based packaging enables active corrosion protection. The molecules integrated in the packaging material or the dispenser system produce a protective atmosphere and a monomolecular layer that reliably protects FE- and NE-metals from corrosion.

### BANTLEON VCI-SOLUTIONS

- VCI-films and bags
- VCI-film hoods
- VCI-stretch film
- VCI-papers and corrugated cardboards
- VCI-bubble wrap
- VCI-dispenser



## R&D / LAB ANALYSIS



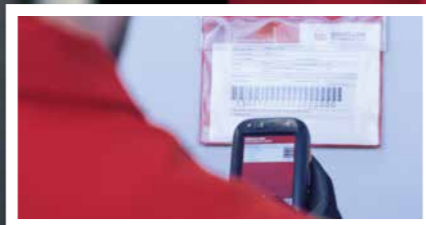
Through our own laboratory, we can offer a decisive benefit to our customers. This enables us to test, inspect and analyze individual requirements. This offers high safety from the beginning across all product areas and competence fields.

Our laboratory services include many relevant methods of testing and analysis. Decades of experience in application technology and oil chemistry as well as the accreditation of our laboratory according to DIN EN ISO/EC 17025 express the high quality standards at BANTLEON.

### OVERVIEW OF OUR SERVICE

- Monitoring of processes and media to extend service life, cost reduction and protection of the environment
- Routine examinations for automotive, industry and metal processing
- Conversion of lubricants and maintenance plans
- Training and guidance for handling of coolants and hazardous substances
- Support in environmental and work-safety-relevant projects





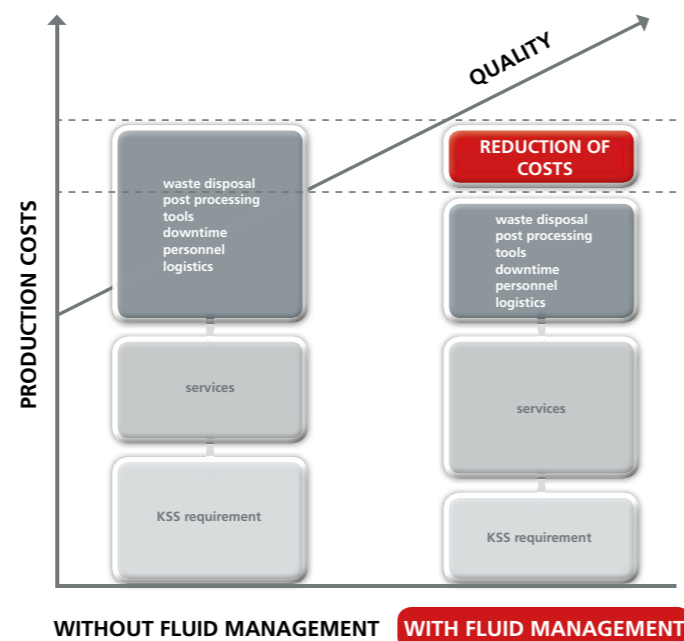
## FLUID MANAGEMENT



BANTLEON's service incorporates the entire care and maintenance of fluids and machines, including innovative and transparent data recording. With KSS-online, BANTLEON offers a digital monitoring instrument.

### BANTLEON FLUID MANAGEMENT SERVICES

- Quality control and assurance
- Process and cost security
- Saving resources
- Gaining legal security
- Maintenance and cost transparency
- Digital data availability
- Seamless traceability



## FILTER TECHNOLOGY



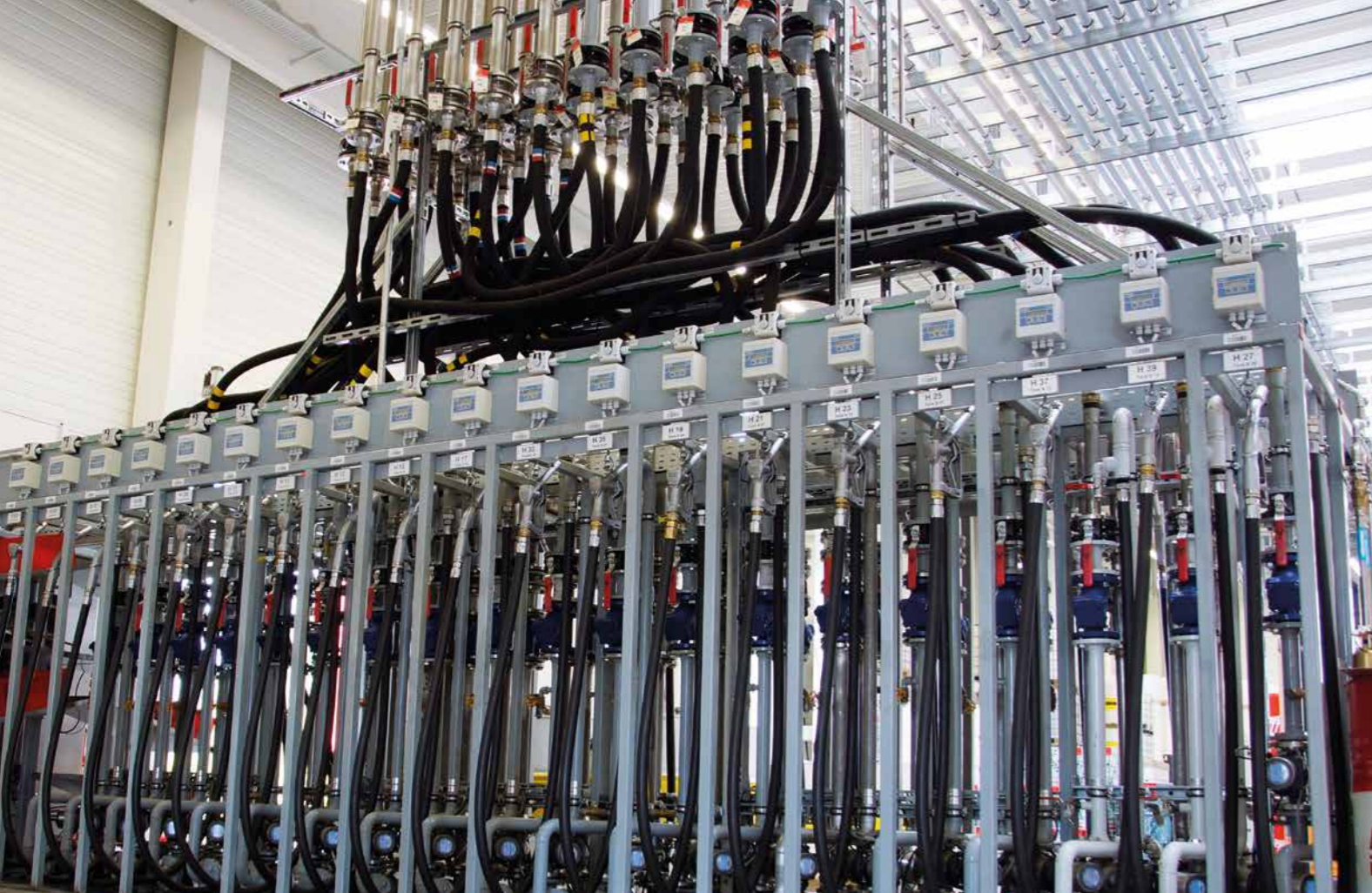
It's simple: Nearly all the relevant filters around your process chain and plant technology from a single source.

We support our customers in the planning and purchase of new plants, as well as in the expansion and optimization of the existing systems. As a special service, we offer cleaning and function inspection for many elements of your filter technology as well. We also support our customers in systematic demand analysis.

### OVERVIEW OF FILTER TECHNOLOGY

- Hydraulic systems and components
- Sand blasting and welding smoke extraction
- Painting systems and air conditioning
- Fleeces for wet filtration at belt filter systems





## INDUSTRY AND TANK ENGINEERING



As a water management act (WHG) specialist, BANTLEON will support you with consultation, planning and implementation of innovative storage and tank technology in compliance with the law, from raw concepts to commissioning and legally secure system documentation.

### THE SERVICES OF INDUSTRIAL AND TANK ENGINEERING

- Extraction/separation systems (emulsion, oil mist, exhaust fumes)
- Centralized oil and grease supply
- Central coolant systems
- Tank and pipeline construction
- Oil and tank storage
- Petrol station construction
- Maintenance and repair of petrol stations
- Chip processing systems
- Workshop equipment
- Welding smoke extraction systems
- Legally secure system documentation

## TANK MAINTENANCE AND TANK SERVICE



Serviced tanks not only ensure that the media in circulation are clean but also guarantee that the storage technology is safe and compliant with the law. The inspection requirements for surface and underground tank facilities are required by the legislature and take place in fixed intervals.

BANTLEON being a specialised company approved by the WHG is permitted to build, maintain, clean from the inside and decommission plants as per AwSV (regulation for the dealing of water-hazardous substances).

The necessary inspection by an expert also takes place in close collaboration with BANTLEON.

### TANK MAINTENANCE AND SERVICE AT A GLANCE:

- Tank cleaning and inspection
- Installation of new tank systems
- Plastic battery tanks
- Steel tanks above/below ground
- Installation of inner sleeves for underground and basement tanks
- Production of oil collection spaces in compliance with provisions
- Disassemblies for tanks and industrial facilities
- Decommissioning of underground and basement tanks
- Official acceptance tests for all tanks makes
- Assembling, removal of defects, repairs, renovations





## BANTLEON FORUM



The BANTLEON Forum is a platform for the exchange of knowledge and training for a wide variety of industries. State-of-the-art media technology paired with a feel-good ambience make the Forum a special event venue in the heart of the science city of Ulm.

The seminar and training rooms with capacities of up to 100 people and various seating options can be rented by companies from Ulm and the region for special events.

The BANTLEON Forum offers all employees, as well as customers, universities and business partners of Hermann BANTLEON GmbH, various possibilities to develop themselves at a personal and professional level in different subject areas.

The Forum thus presents a sustainably oriented platform for initial and further training, general information, networking and dialog events. Furthermore some of the offered seminars present the opportunity to gain training points from the Association of German Safety Engineers (VDSI).

The BANTLEON Forum mirrors our demands regarding quality, values and sustainable responsibility.

**Request our seminar program: [forum@bantleon.de](mailto:forum@bantleon.de)**



## WORKING AT BANTLEON



**“Quality starts with me!” With this motto, we have been writing our success story for more than 100 years.**

BANTLEON is a medium sized company with around 250 committed and highly qualified employees throughout Germany who contribute to our success. We have always been committed to continuity, quality and a sustainable, healthy growth. We support your professional career at BANTLEON with targeted further education measures and different career paths.

A familiar, appreciative working atmosphere as well as a multitude of interesting social benefits are essential for us. Simply because we know that only enthusiastic employees can inspire our customers!

If you also want to become part of the B Family, then visit us on our homepage for more information at [www.bantleon.de](http://www.bantleon.de)







NO MATTER WHERE  
YOU NEED US, WE WILL  
SUPPORT YOU WITH  
**OUR SOLUTIONS!**

**As an internationally operating company, we have invested early on into a network of top partners in different countries. This enables us to offer you professional solutions in all the important production sites of the world.**

This claim is part of our corporate philosophy that recognises quality as its central element. Therefore, we consider quality to go far beyond the product – it comprises all corporate services from consulting to analysis, individual product development, production and logistics. Use our international presence to your benefit.

**WE ARE THERE FOR YOU!**

Austria Australia Brazil Bulgaria Colombia  
China Croatia Czech Republic Estonia  
Finland France Great Britain Greece  
Germany Hungary India Indonesia Ireland  
Italy Japan Latvia Malaysia Mexico  
Namibia Netherlands New Zealand Paraguay  
Poland Portugal Russia Singapore Spain  
Slovakia Slovenia South Africa Switzerland  
Taiwan Thailand Turkey USA Vietnam





**Head office Ulm, Germany**  
**Hermann BANTLEON GmbH**  
Blaubeurer Straße 32  
89077 Ulm  
Phone: +49 (0)731 / 39 90-0  
Email: [info@bantleon.de](mailto:info@bantleon.de)

**Location Ulm-Nord, Germany**  
**BANTLEON Logistic Center**  
Im Lehrer Feld 49  
89081 Ulm-Nord  
Phone: +49 (0)731 / 39 90-0  
Email: [info@bantleon.de](mailto:info@bantleon.de)

**Location Crimmitschau, Germany**  
**Hermann BANTLEON GmbH**  
Breitscheidstraße 81  
08451 Crimmitschau  
Phone: +49 (0)3762 / 70 02-0  
Email: [crimmitschau@bantleon.de](mailto:crimmitschau@bantleon.de)

[www.bantleon.de](http://www.bantleon.de)



**BANTLEON**  
Ideas. Systems. Solutions.