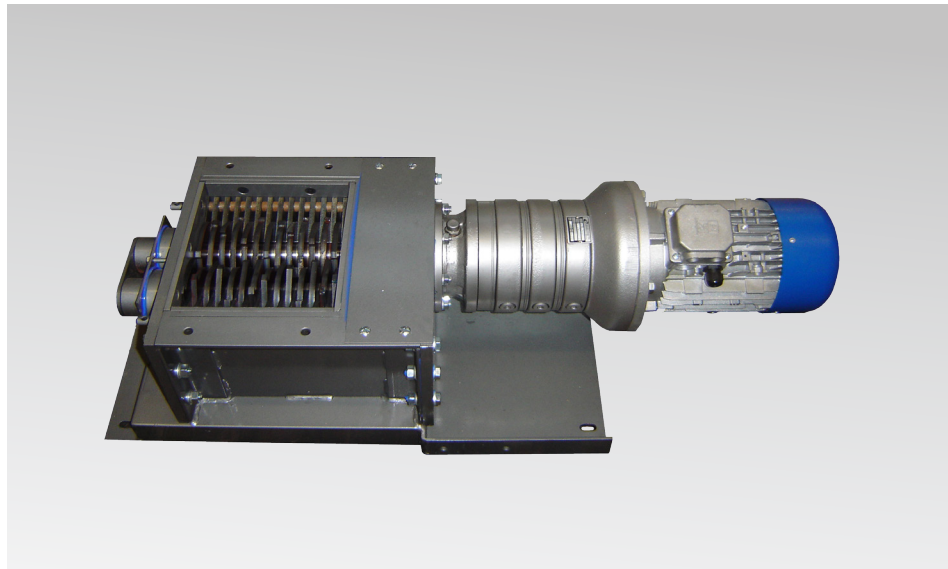


ERDWICH  
TWO-SHAFT-SHREDDER

M250/2-160  
M250/2-230  
M250/2-350



Advantages and special features:

ERDWICH M250/2

■ **Simple maintenance:**

- | Fast access to cutter shafts
- | Individually fitted, replaceable cutters, spacing rings and sweepers

■ **Savings on operating costs:**

- | Long service life guaranteed by cutters from custom blade steel, fully hardened to permit repeated re-sharpening

■ **Highly-efficient shredding:**

- | High-precision cutter assembly with cutter shapes adjusted to the material
- | Configurable population of the cutter discs on a 6-sided shaft, ensuring optimum feed-in behaviour

■ **High throughput – low drive power consumption:**

- | Tightest-possible cutter spacing, ensuring energy-saving shredding without causing machine jams
- | Special sweeper systems with self-cleaning feature

■ **Robust and long-lived:**

- | Generously dimensioned, milled cutter shafts
- | Bulkhead seals to protect the shaft bearing from liquid and aggressive materials

■ **Cost-effective, safe operation:**

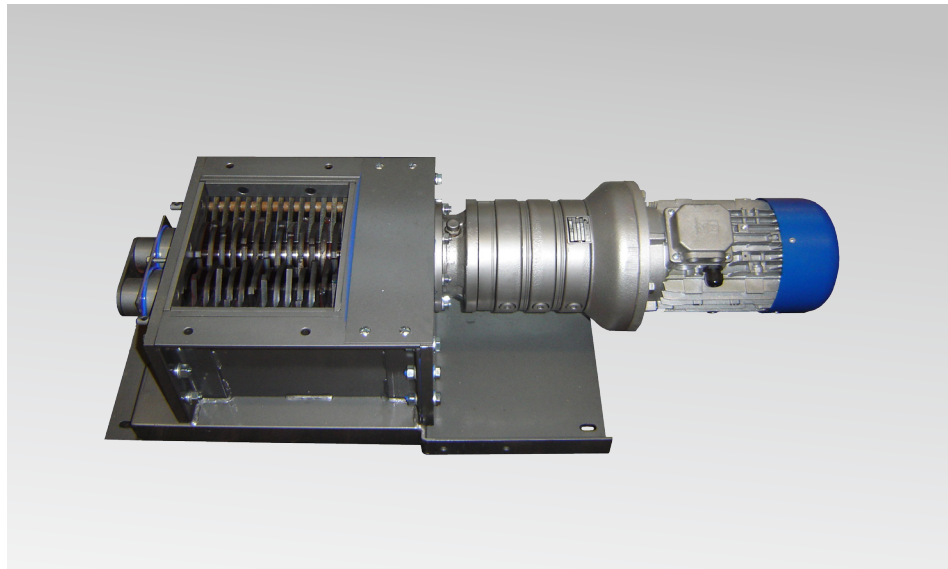
- | PLC unit featuring automated reverse and power down to protect the machine against damage from overloading or solid parts



**ERDWICH**  
... SHREDDING UNLIMITED ...

ERDWICH  
TWO-SHAFT-SHREDDER

M250/2-160  
M250/2-230  
M250/2-350



Technical Data:

Typ	Amount of stator knives	Drive power	Cutting unit size (LxW mm)	Weight (kg)	Width of rotor knife* (mm)
M250/2-160	2	3,0 kW	160 x 265	250	8
M250/2-230	2	3,0 kW	230 x 265	280	8
M250/2-350	2	3,0 kW	350 x 265	320	8

Dimensions:				
	Dimension	M250/2-160	M250/2-230	M250/2-350
Total length A	mm	930	1.050	1.1170
Total width B	mm	415	415	415
Total height C	mm	341,5	341,5	341,5
Cutting unit length X	mm	145	215	335
Cutting unit width Y	mm	250	250	250

Subject to technical changes.

