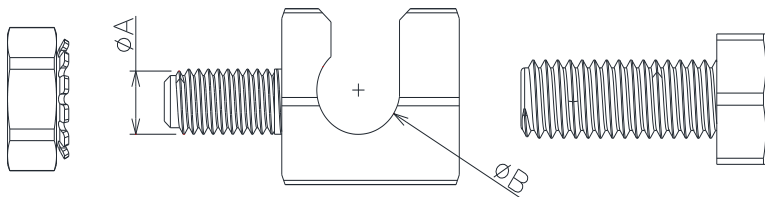


太阳能接地连接器 Solar grounding connector/solar earth lugs

产品规格
Product Specifications

材料 Material	Copper/SUS304	颜色 Color	White
支架的厚度范围 Frame Thickness Range	0.8-4.5mm	环境温度范围 Ambient temperature range	-40°C...+85°C(IEC)

图示:
Drawing:

料号
part number:

料号Part No	A	B	适配电线Cable size
L08001-001	5	6.8	1.5-16
L08001-002	4	5.5	1.5-10
L08001-003	6	10	6-35

安装方法:
Installation Method:
